

PRODUCT DESCRIPTION

The LED lamp emergency equipment work with all the led lights which the input voltage is AC120V, powering the AC driver of the led lights. The output voltage of emergency equipment is 170V DC which equals to 120V AC. The LED Lamp Emergency equipment is a UL Recognized LED Lamp Emergency equipment that allows the same LED fixture to be used for both normal and emergency operation. In the event of a power ailure, the LED Lamp Emergency equipment switches to the emergency mode and operates the existing fixture for 90 minutes. The unit contains a battery, charger, and converter circuit in a single can and is available in different mounting configurations for individual fixture requirements.

1. The ATM-18 is for use with an LED lamp load up to 18W at a rated voltage of 170VDC
2. The ATM-25 is for use with an LED lamp load up to 25W at a rated voltage of 170VDC

FEATURES

1. Long life high temperature recyclable Ni-Cad battery.
2. Includes test switch and charge indicator accessory kit.
3. For use with switched or unswitched fixtures
4. Meets or exceeds all National Electrical Code and Life Safety Code Emergency Lighting

TECHNICAL SPECIFICATIONS

Model(UL)	ATM-18	ATM-25
Output Power	18W(Max)	25W(Max)
Input Power	6 Watts(Max)	6 Watts(Max)
Output Voltage	170VDC(Equivalent 120VAC)	
Emergency Operation	≥90 minutes	
Operating Temp	0°C to 50°C	
Input Voltage	100-277 VAC, 50-60Hz	
Battery	High Temp Nickel-Cadmium 48 Hour Recharge 7-10 Year Life Expectancy	
UL Conditions of Acceptability	Must be factory wired Battery temperature must not exceed 50°C	

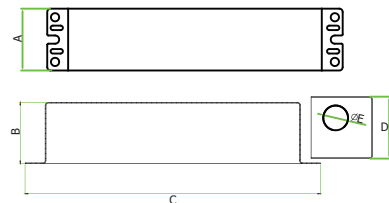
Model(UL/CUL)	ATM-18	ATM-25
Output Power	18W(Max)	25W(Max)
Input Power	6 Watts(Max)	6 Watts(Max)
Output Voltage	170VDC(Equivalent 120VAC)	
Emergency Operation	≥90 minutes	
Operating Temp	0°C to 50°C	
Input Voltage	120-250 VAC, 50-60Hz	
Battery	High Temp Nickel-Cadmium 48 Hour Recharge 7-10 Year Life Expectancy	
UL Conditions of Acceptability	Must be factory wired Battery temperature must not exceed 50°C	

LED Lamp Emergency Equipment

For LED Product With Internal Driver

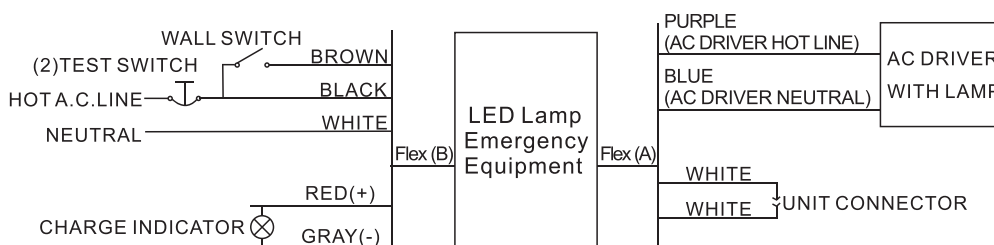


Dimensions



Model	ATM-18	ATM-25
A	69mm	69mm
B	71mm	71mm
C	377mm	377mm
D	69mm	69mm
E	22.2mm	22.2mm

TYPICAL WIRING DIAGRAM



- (1) DO NOT MATE CONNECTOR UNTIL INSTALLATION IS COMPLETE AND AC POWER IS SUPPLIED.
- (2) TEST ACCESSORY LEADS-OBSERVE PROPER POLARITY WIRING.
- (3) The WALL SWITCH control the on and off of the AC DRIVER when the urban voltage is normal.